

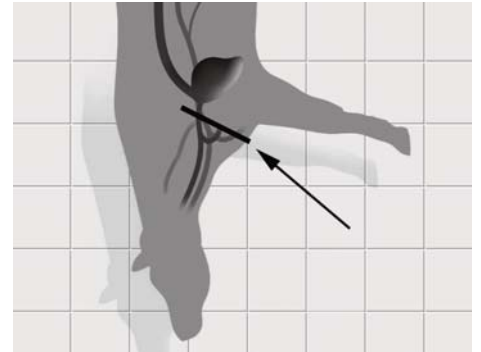
# HUMANE SLAUGHTER OF CATTLE



Penetrative captive-bolt position  
(front view)



Penetrative captive-bolt position  
(side view)



Stick position  
(side view)

**CORRECT POWER:** use 3 or 4 grain cartridge in well-maintained device

**CORRECT POSITION:** use same position for polled & horned animals

**CORRECT STICK:** stick within 60s using chest stick

---

## SIGNS OF AN EFFECTIVE STUN

---

- > Animal collapses
- > No rhythmic breathing
- > Fixed, glazed expression in the eyes
- > No corneal reflex
- > Relaxed jaw
- > Tongue hanging out

**If in doubt, always stun the animal again using a serviceable back-up stunner**

- > If first shot is off target, place the second shot as close to the correct position as possible
- > If the first shot is on target but fails to produce an effective stun, the second shot should be 2cm above and 2cm to one side of the first.

---

For further information contact:

**Humane Slaughter Association**

The Old School, Brewhouse Hill, Wheathampstead, Herts AL4 8AN, UK

t: +44 (0)1582 831919 f: +44 (0)1582 831414 e: [info@hsa.org.uk](mailto:info@hsa.org.uk) w: [www.hsa.org.uk](http://www.hsa.org.uk)

Registered in England Charity No 1159690 Charitable Incorporated Organisation © HSA 2016 text amended 2008